



Sarasota - Manatee Traffic Incident Management Team

*December 9, 2014
Meeting Minutes*

Attendees:

<u>Name</u>	<u>Agency</u>	<u>Name</u>	<u>Agency</u>
Frank Dickson	DBI Services	Justin Merritt	FDOT
Richard Fimbel	DBI Services	Brandy Boccuti	Metric Engineering, Inc.
Rory Howe	Parsons	Charles Stratton	Metric Engineering, Inc.
Joe Hamby	Parsons	Mark Crawford	S. Manatee Fire
Bill Fuller	FDOT	Greg Bacon	Manatee Co. Emergency
Kevin Salsbery	FDOT	Mukunda Gopalakrishna	Manatee Co. Public Works
Jeff Tobergte	FDOT	Fabio Capillo	RTMC
		Scott Robbins	FDOT/HNTB
		Lee Vincent	FDOT/Lucent Group

Call to Order: The Sarasota-Manatee TIM Team meeting was held on Tuesday, December 9th at 1:30pm at the Manatee County Public Safety Center, 2101 47th Terrace East, Bradenton, FL 34203. Bill Fuller, Rory Howe, and Charles Stratton facilitated the meeting.

Bill Fuller reminded the Team that the new goal for the TIM meetings will be “practicing what we preach”: the goal will be to keep meetings to 90 minutes!

Introductions: Team members introduced themselves and the agencies they represent.

Agency News:

Road Rangers

The Road Ranger Comment Card 1st Quarter Report has been released. To read the full report, please visit the TIM team website at: <http://www.swfltim.org>.

Towing and Wrecker News

No agency news.

Other Agency News

No agency news.

Update on TIM Initiatives:

National/State/Regional

Mr. Rory Howe spoke to the team about safe parking and scene safety for first responders while responding to incidents.

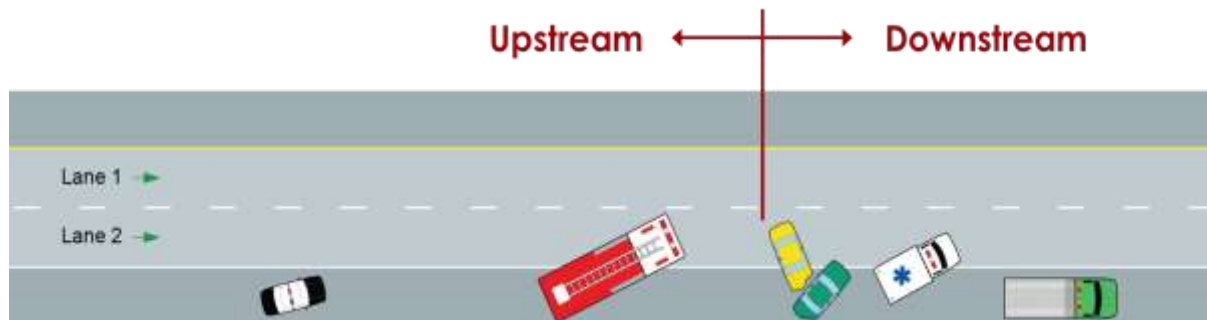
When positioning emergency vehicles at an incident it should be in a manner that attempts to:

- Protect the responders performing their duties
- Protect road users traveling through the incident scene
- Minimize, to the extent practical, disruption of the adjacent traffic flow

Typical vehicle positioning should be set up as the following:

Upstream vehicles include law enforcement, fire, and DOT or safety service patrol vehicle.

Downstream vehicles include ambulance, tow truck, and other support units. Also see below illustration of typical vehicle positioning.



Additionally, the team participated in a hands on table top exercise. The purpose of tabletop exercise is to educate responders on how to apply the basic principles of traffic control and scene management for various incident scenarios. Training participants explore challenges associated with operations at the scene of a crash. Each participant takes on a different role to understand the challenges from another's perspective. For example, a law enforcement official might play the role of a tow truck operator. To view the full presentation, please visit the TIM team website at: <http://www.swftim.org>.

Bill Fuller informed the team about the National Traffic Incident Management Responder Training Web-based Training (WBT). The National Highway Institute (NHI) trainings cover a range of transportation issues and are available in a variety of formats in order to best meet the needs of the transportation community. Additionally, NHI's no-cost Web-conference seminars and Web-based trainings offer valuable training and information at no cost. The series features guest speakers presenting case studies on problems or issues they've faced in the field and what steps were taken to solve the problems. Participants are able to ask questions and receive answers. Select the link below to view detailed information on the course via the NHI Web site: [Course Details- 133126.pdf](#). For further information on registering for NHI courses, please click here: [click here](#).

Bill Fuller informed the team about the upcoming District 7 TIM team meetings for Pinellas County, February 3rd and also in Hillsborough County, February 17th. Mr. Fuller also informed the team about the upcoming Polk County TIM team meeting taking place on January 8th.

Bill Fuller spoke to the team about the dangers of possible chemical suicide(s) during the holidays. This is the new way to commit suicide. Unfortunately, first responders could be potential victims if they do not remain acutely aware of their surroundings. First responder awareness and education regarding this method is key in saving their own life. To learn more about chemical suicide, please click on the following link: [Chemical Suicide](#)

Mr. Charles Stratton reviewed with the team the 2014 Traffic Incident Management (TIM) Self-Assessment Fact Sheets. To read the full report, please visit the TIM team website at: <http://www.swfltim.org>.

Mr. Fabio Capillo, RTMC Manager and Mukunda Gopalakrishna, Manatee County Public Works presented to the team the after-action summary of the I-75 at Trooper J.D. Young Bridge Incident. Recently at the Sarasota-Manatee Regional Traffic Management Center (RTMC) on October 29, 2014 Fabio Capillo, RTMC Manager, coordinated a detailed impact assessment of a major traffic incident which took place on August 22, 2014. The incident occurred on I-75 at the Trooper John D. Young Bridge over the Manatee River which affected regional traffic and required the detouring of I-75. Responding agencies were invited to discuss the RTMC's capabilities and traffic incident management coordination during the incident. RTMC staff both shared their experience and received input on the coordination between the RTMC, stakeholders and emergency responders. To view the full presentation of the details of the after-action summary of the I-75 at Trooper J.D. Young Bridge Incident, please visit the TIM team website at: <http://www.swfltim.org>.

Bill Fuller briefly spoke to the team about a recent article from the Los Angeles Daily News about distracted responders. There is another category of drivers that most people don't think of when they think about distracted or dangerous drivers - emergency first responders. Police cars, ambulances and other emergency vehicles have several distractions while they are driving such as GPS devices, cell phones, and laptop computers. Unfortunately, using these technologies while attempting to save lives may also put many other people in harm's way. To read the full article, please visit the TIM team website at: <http://www.swfltim.org>

FDOT Construction Update

Mr. Bill Fuller requested that all TIM Team members make sure they are receiving the District One Weekly Road Watch Reports and to contact him if there were any concerns.

Active Construction:

No updated information was provided by the TIM Team.

Completed Construction:

No updated information was provided by the TIM Team.

Anticipated Future Construction:

No updated information was provided by the TIM Team.

Additional construction information is available on the FDOT Road Watch website located at <http://www.dot.state.fl.us/publicinformationoffice/construc/constmap/d1.shtm>. This resource is updated on a weekly basis.

Future Meetings:

The next Sarasota-Manatee County TIM Team will be February 10, 2015 at 1:30 PM at the Manatee County Public Safety Center, 47th Terrace East 2101, Bradenton Florida, 34203.

As always, please continue to visit the TIM Team website for updates, and also help support our TIM Team by providing the TIM Team website to others that may be interested in joining our team! [http://www.swfltim.org/](http://www.swfltim.org)

If you have any questions or need additional information, please contact the District One TIM Team Manager, Mr. Bill Fuller at (239) 225-9815 or via email at william.fuller@dot.state.fl.us.